



Sharplex[®]

molten sulphur filter

Efficient Performance



Sharplex[®]

molten sulphur Filter

Efficient Performance

Sharplex have supplied several filters for molten sulphur filtration in sulphuric acid & sulphonation plants.

Normally 'ASH' is a impurity which needs to be removed from sulphur so that further processing using molten sulphur should be smooth.

Sharplex offers horizontal pressure leaf filter for molten sulphur filtration in following two versions

shell retraction design

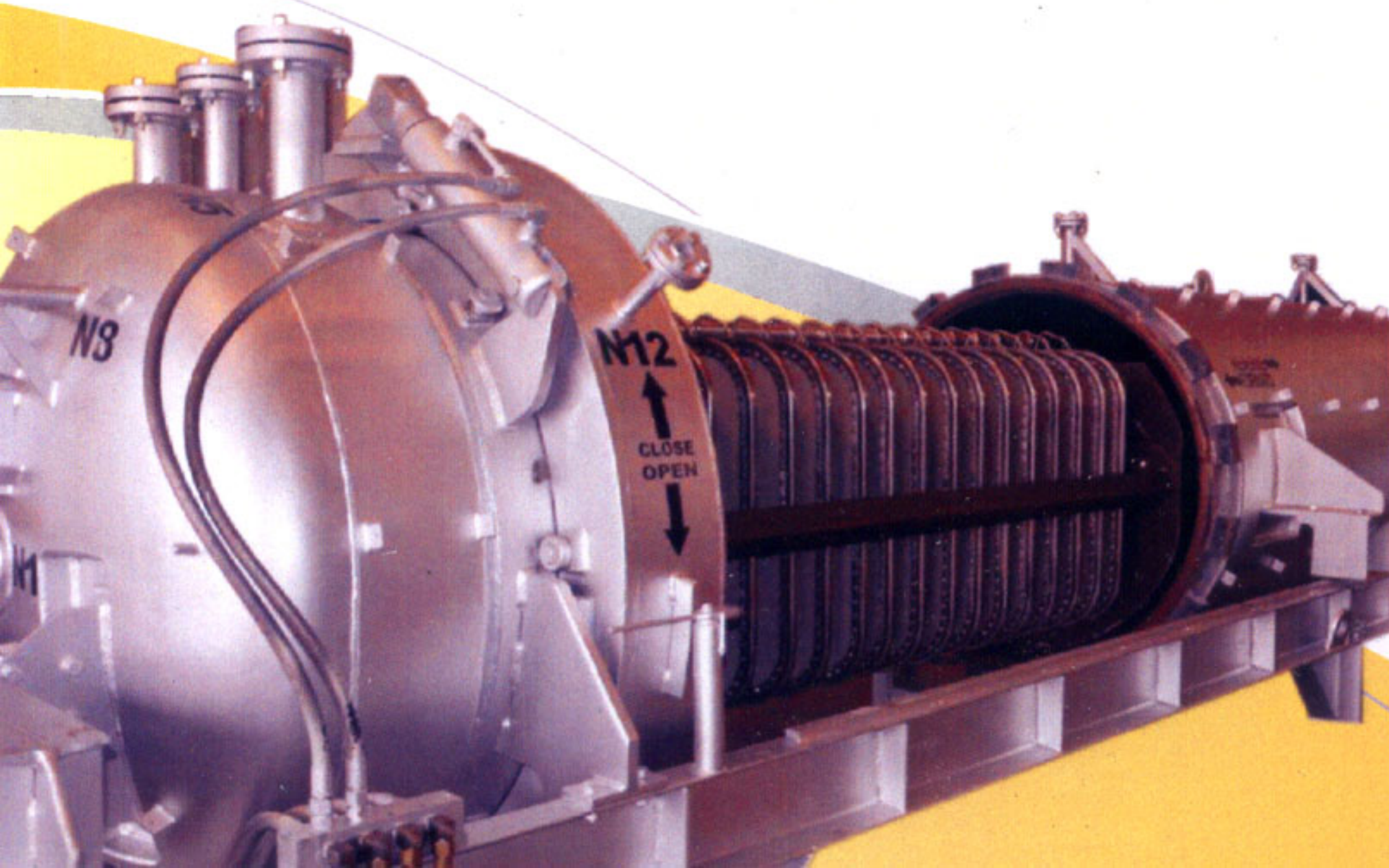
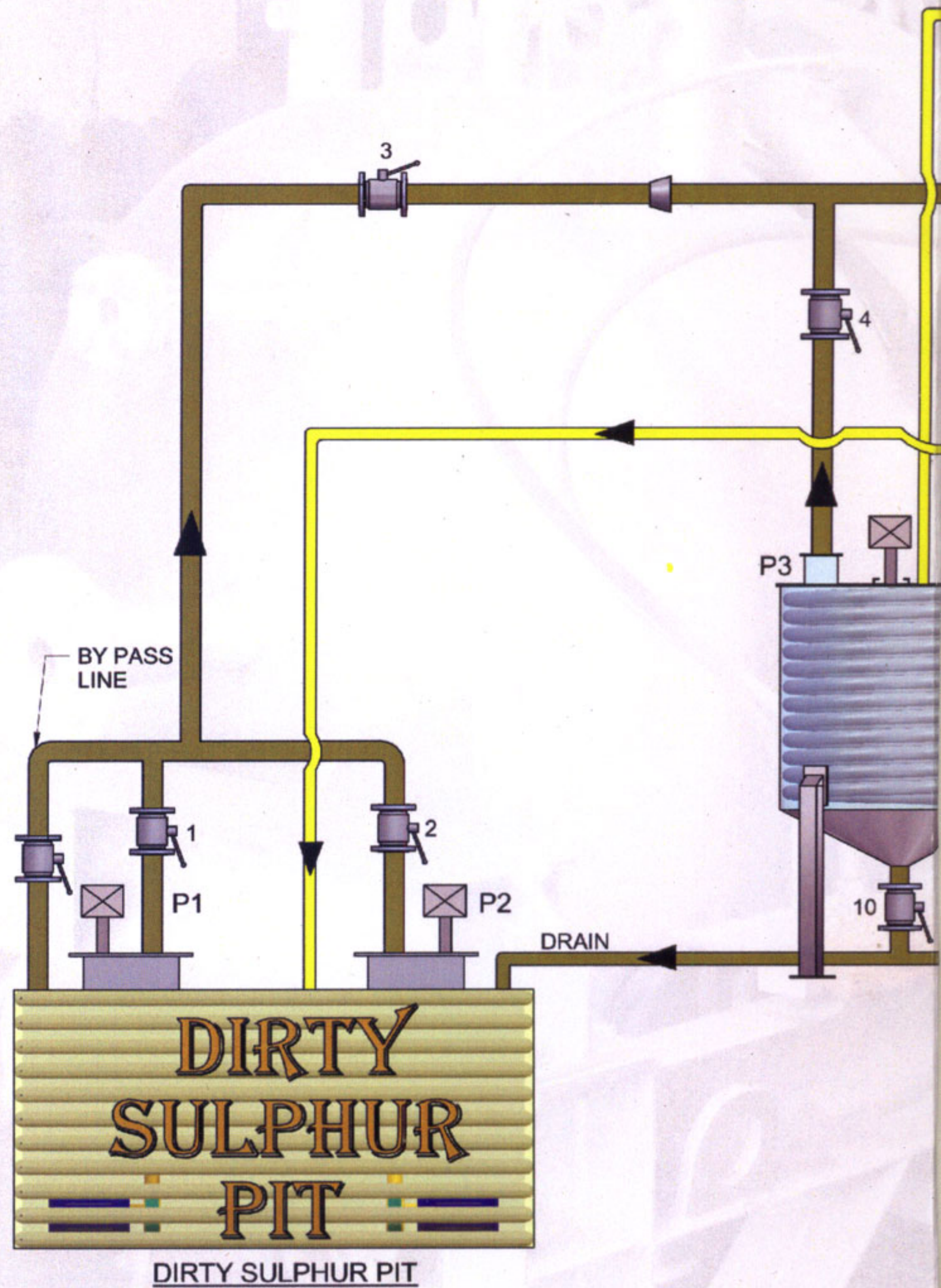
In shell retraction design leaf remains steady and shell retracted to & fro.

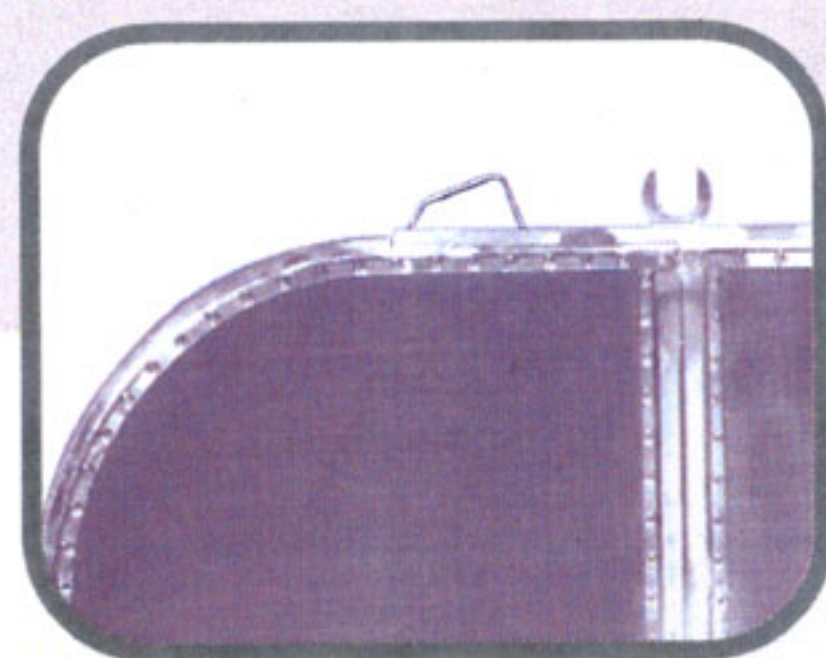
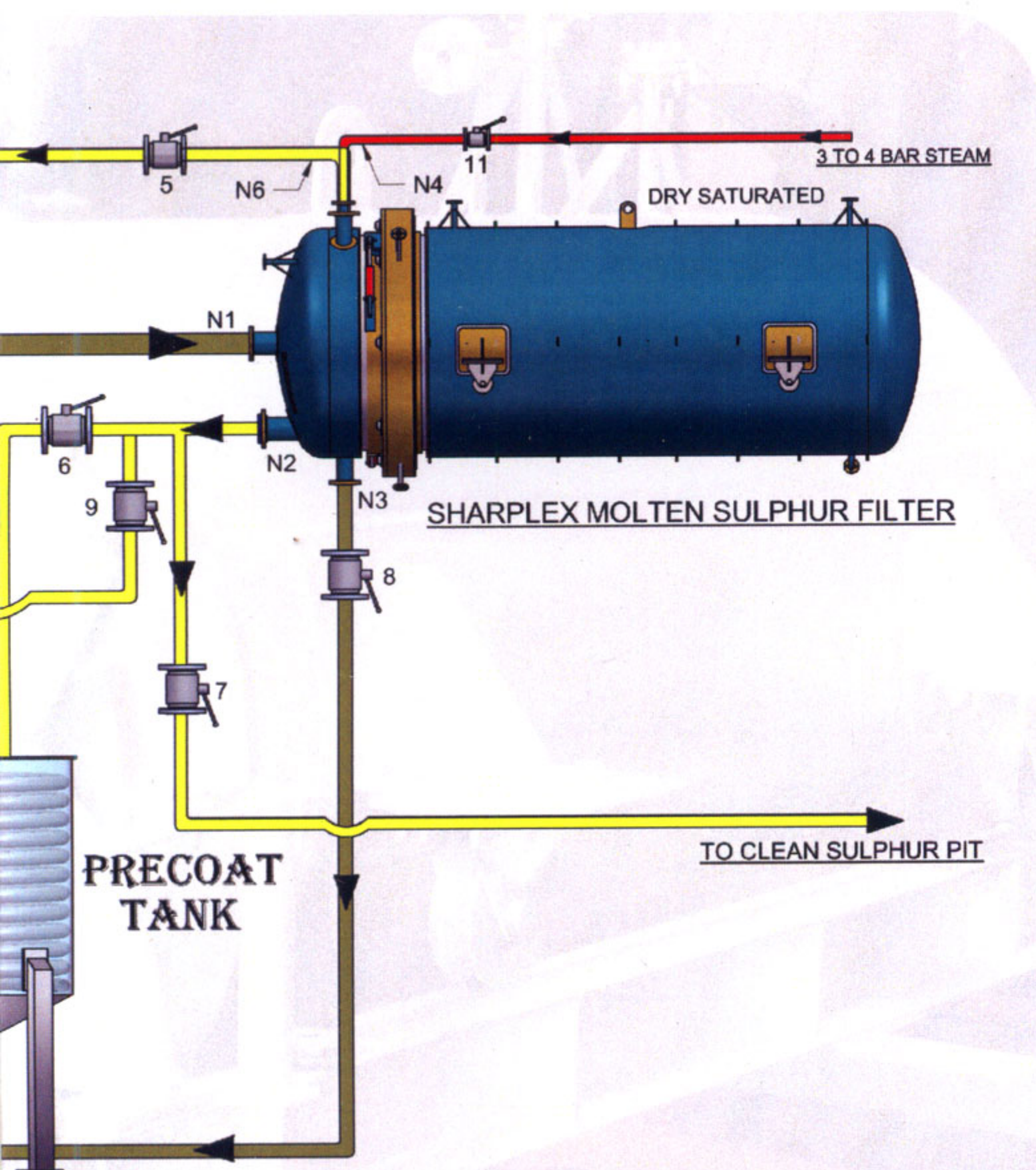
bundle retraction design

In bundle Retraction Design Shell is steady and leaf bundle is retracted to and fro.

Both the versions are operated (for opening and closing of filter) hydraulically for easy of operation.

Filtration AREA : from 5m² to 200m²





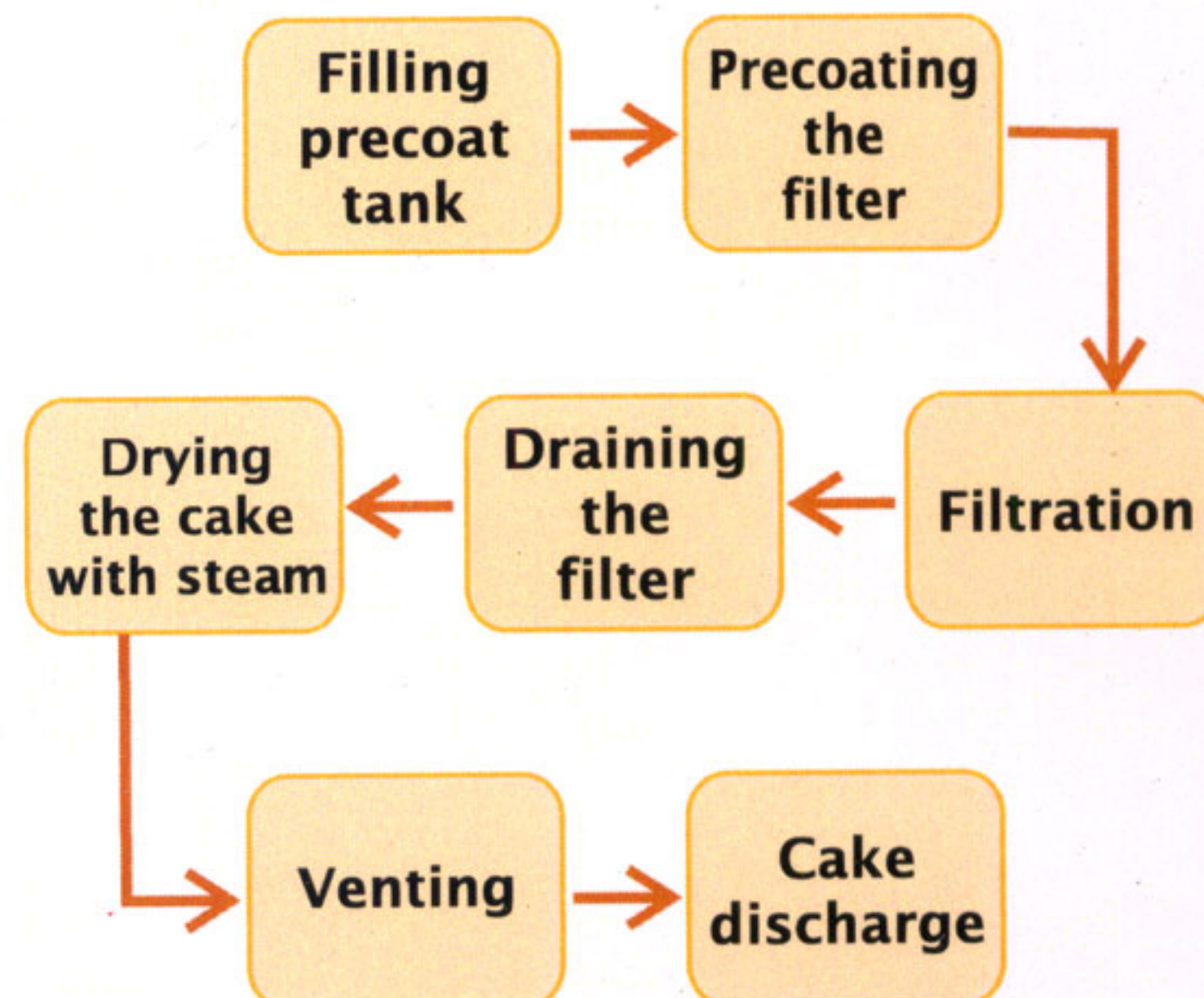
Filter leaf



general process

Initially the filter is precoated with filteraid (kieselguhr or perlite). After precoating molten sulphur from sulphur pits is fed to the filter for filtration of ash. After the filtration cake is dried with steam. After drying is complete filter is opened and cake is removed manually by knocking at leaf bottom by wooden spatula.

typical filtration cycle



material

Normally filter vessel is manufactured in carbon steel / boiler quality material and is jacketed.

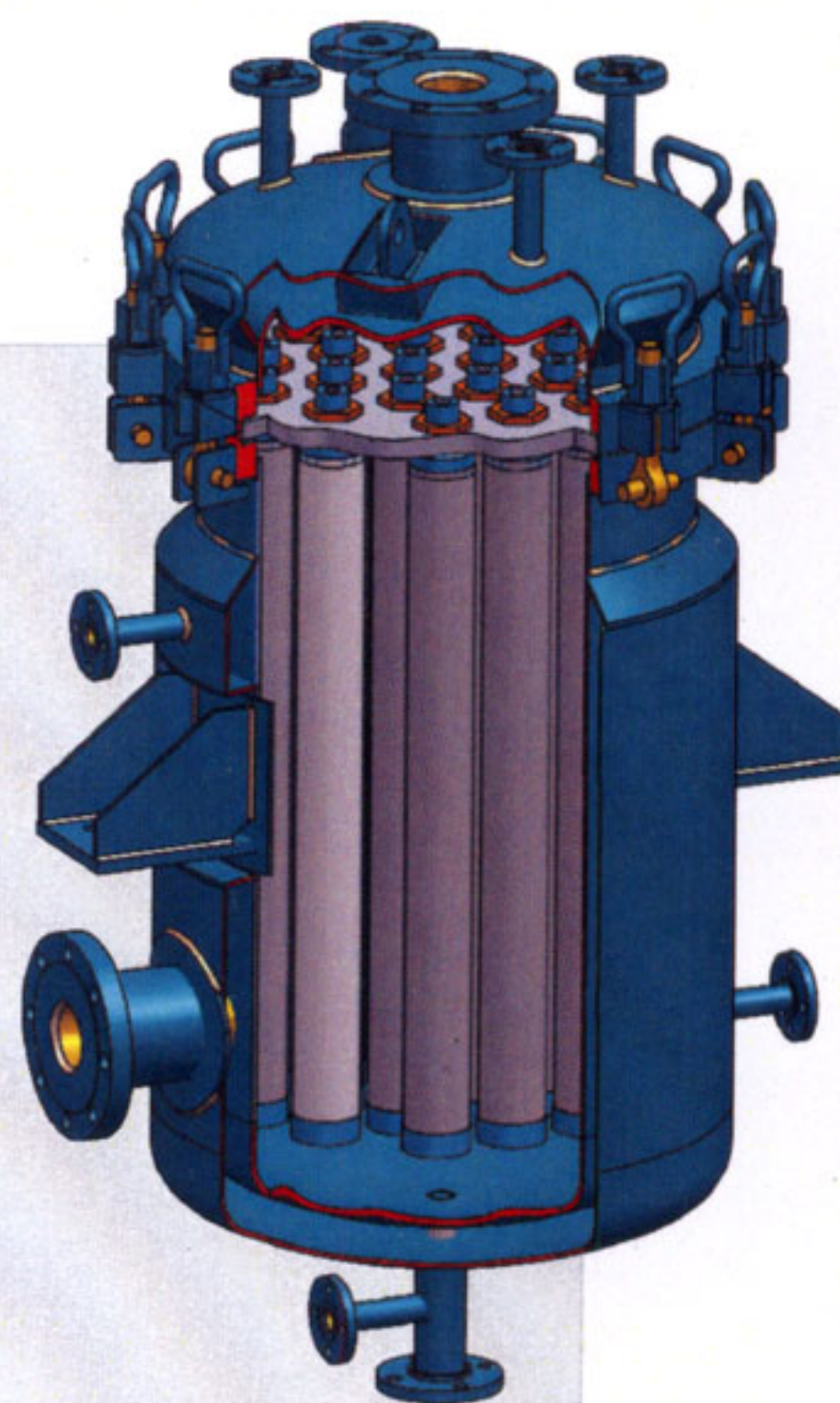
Filter leaves are made of 5 layer design and are in complete stainless steel. Leafs are bolted or rivetted design.

Cartridge filters

for sulphur polishing

Cartridge type polishing filters are installed after main molten sulphur filters to remove traces of fine suspended particles of ash and filter aids escaped from main filter, which may choke the downstream equipments in the plant.

The removal of these fine solids will help in running the downstream equipments smooth without interruptions. This will result in reducing the downtime of the plant to great extent.



CE



SHARPLEX FILTERS (INDIA) PVT. LTD.

AN ISO 9001:2008 COMPANY

R-664, T.T.C. Industrial Area, Thane-Belapur Road, Rabale, MIDC, Navi Mumbai - 400 701, India

Tel.: +91-22-27696322 / 31 / 39 Fax : +91-22-27696325 E-mail : sharpdex@vsnl.com

w w w . s h a r p l e x . c o m